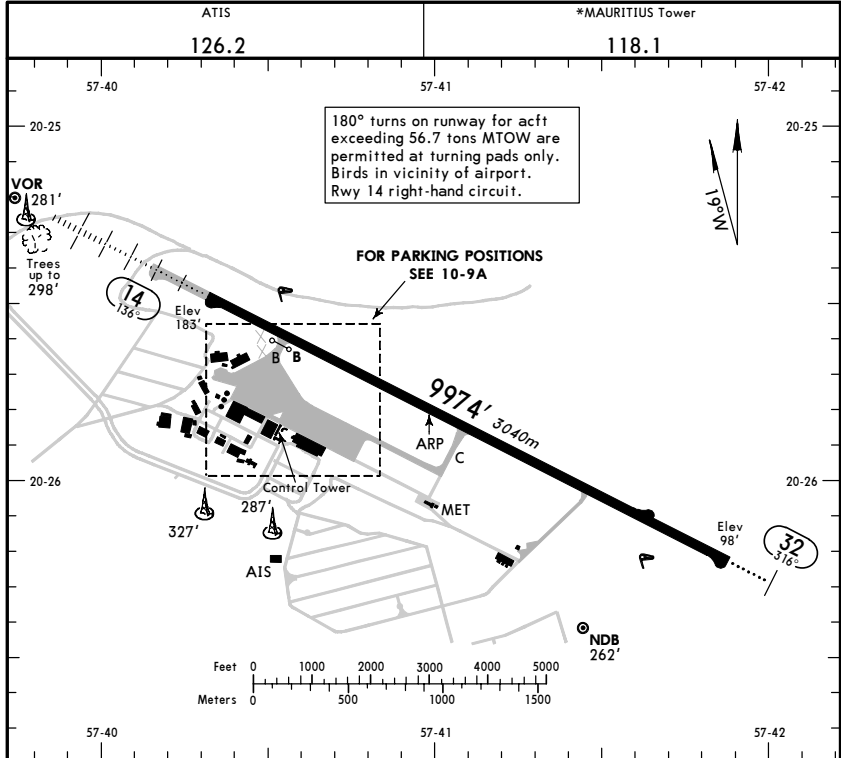


FIMP/MRU **JEPPESEN** **MAURITIUS, MAURITIUS**
 Apt Elev **183'** 28 MAY 04 **(10-9)** **SIR SEEWOOSAGUR RAMGOOLAM INTL**
 S20 25.8 E057 41.0



RWY	ADDITIONAL RUNWAY INFORMATION				USABLE LENGTHS			
	LANDING BEYOND		TAKE-OFF		Threshold	Glide Slope	TAKE-OFF	WIDTH
14	HIRL (58m) HIALS	PAPI-L (angle 3.5°)	RVR	8943'	2726m	11,056'	3370m	148'
32	HIRL (58m) ALS	PAPI (angle 3.0°)						45m

Includes starter extension of 1083'/330m with special permission.

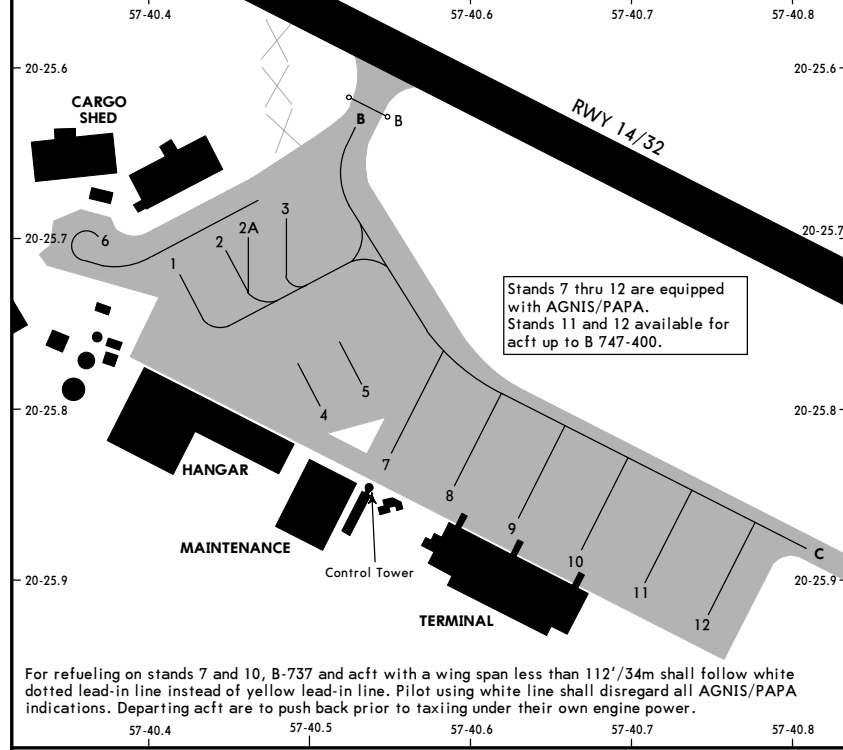
SUPPLEMENTARY GUIDANCE FOR B-747 TYPE ACFT
 To carry out 180° turn: make initial turn from rwy centerline following nose-wheel guidance line, so that red & green pole mounted lights R1 & G1 are in line ahead. When red & green pole mounted lights R2 & G2 are in transit (at 90° to acft heading) with acft cockpit, commence turn and follow nose-wheel guidance line until aligned on rwy heading.

System is also suitable for B-707 & similar acft, but range indication is not applicable due to differences in cockpit height.

TAKE-OFF & DEPARTURE PROCEDURE	
AIR CARRIER (JAA)	
All Rwy's	
LVP must be in force RCLM (DAY only) or RL	RCLM (DAY only) or RL
A 250m	400m
B 250m	400m
C 300m	400m
D 300m	400m

DEPARTURE PROCEDURE
 Aircraft intending to turn right after taking off on Rwy 14 should maintain Rwy heading to at least 1200 ft before commencing the right turn.

FIMP/MRU **JEPPESEN** **MAURITIUS, MAURITIUS**
 28 MAY 04 **(10-9A)** **SIR SEEWOOSAGUR RAMGOOLAM INTL**
 S20 25.8 E057 41.0



INS COORDINATES					
STAND No.	COORDINATES	ELEV	STAND No.	COORDINATES	ELEV
1	S20 25.7 E057 40.4	186	11	S20 25.9 E057 40.7	178
2	S20 25.7 E057 40.4	185	12	S20 25.9 E057 40.7	175
2A, 3	S20 25.7 E057 40.5	184			
4	S20 25.8 E057 40.5	182			
5	S20 25.8 E057 40.6				
6	S20 25.7 E057 40.4	186			
7	S20 25.8 E057 40.5	186			
8	S20 25.8 E057 40.6	184			
9	S20 25.9 E057 40.6	182			
10	S20 25.9 E057 40.7	179			

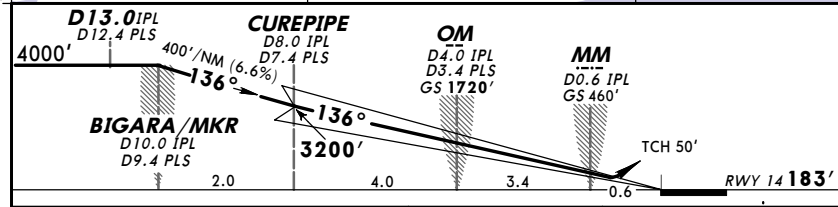
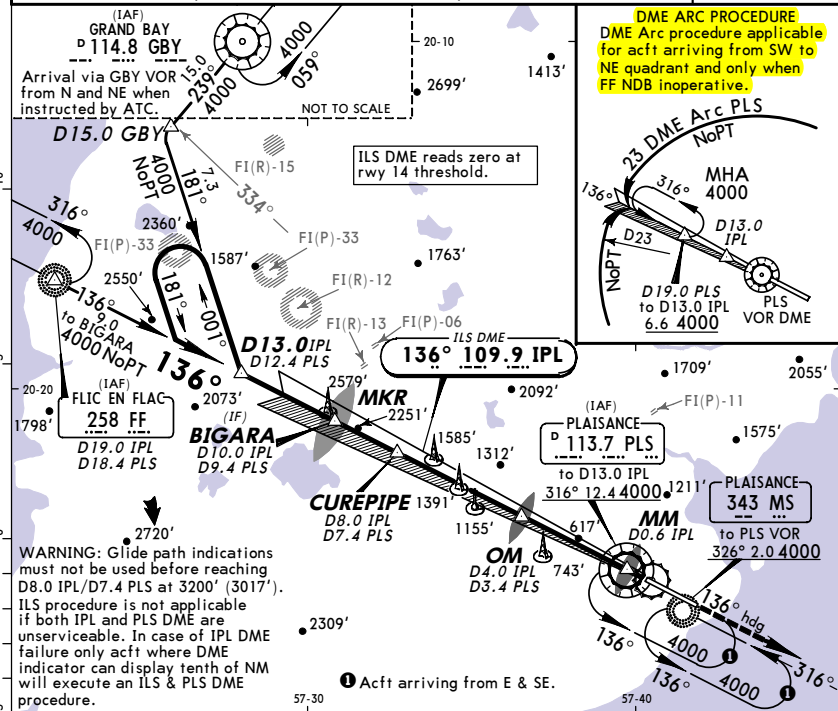
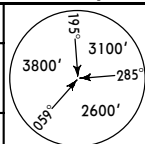
FIMP/MRU
SIR SEEWOSAGUR
RAMGOOLAM INTL

JEPPESEN MAURITIUS, MAURITIUS
5 AUG 05 (11-1) **ILS DME Rwy 14**

ATIS 126.2		*MAURITIUS Approach 119.1		*MAURITIUS Approach/Tower 118.1	
LOC IPL 109.9	Final Apch Crs 136°	GS OM 1720' (1537')	ILS DA(H) Refer to Minimums	Apt Elev 183'	RWY 183'

MISSED APCH: Climb to 4000' on heading 136° and contact ATC.

Alt Set: hPa Rwy Elev: 7 hPa Trans level: By ATC Trans alt: 4000'



Gnd speed-Kts	70	90	100	120	140	160
GS	3.50°	439	565	628	753	879

HIALS 4000' on 136° hdg

STRAIGHT-IN LANDING RWY 14 ILS		LOC (GS out)	
DA(H) A: 426' (243') B: 436' (253')	C: 446' (263') D: 456' (273')		
FULL ALS out			
A RVR 720m	1200m	For LOC (GS out) apch refer to chart 11-2	
B VIS 800m			
C			
D			

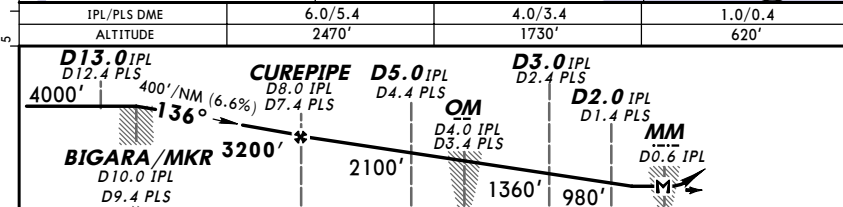
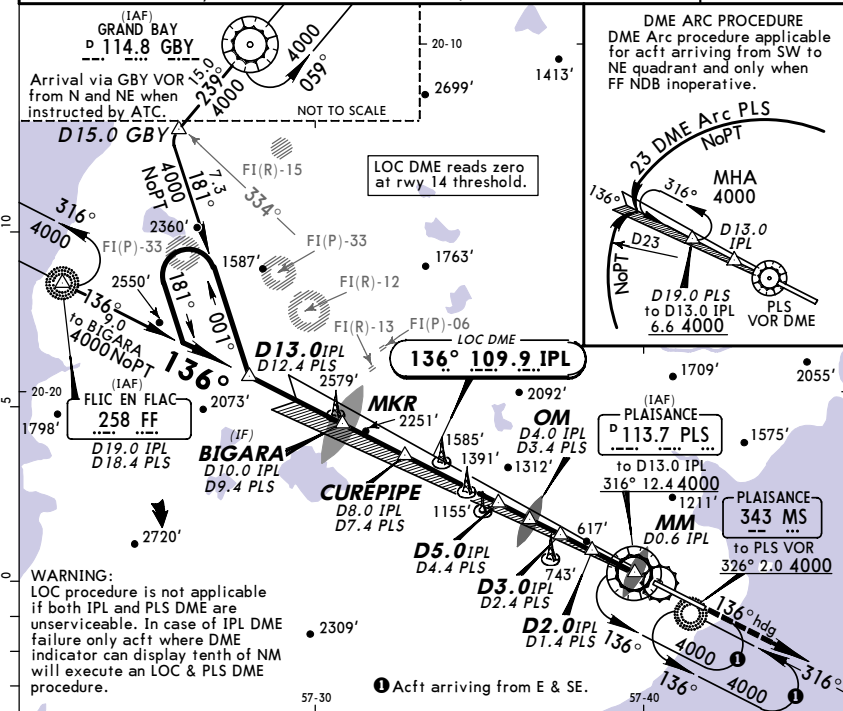
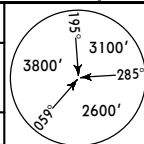
FIMP/MRU
SIR SEEWOSAGUR
RAMGOOLAM INTL

JEPPESEN MAURITIUS, MAURITIUS
5 AUG 05 (11-2) **LOC DME Rwy 14**

ATIS 126.2		*MAURITIUS Approach 119.1		*MAURITIUS Approach/Tower 118.1	
LOC IPL 109.9	Final Apch Crs 136°	Minimum Alt CUREPIPE 3200' (3017')	MDA(H) 860' (677')	Apt Elev 183'	RWY 183'

MISSED APCH: Climb to 4000' on heading 136° and contact ATC.

Alt Set: hPa Rwy Elev: 7 hPa Trans level: By ATC Trans alt: 4000'



Gnd speed-Kts	70	90	100	120	140	160
Descent Gradient	6.1%	432	556	618	741	865

HIALS 4000' on 136° hdg

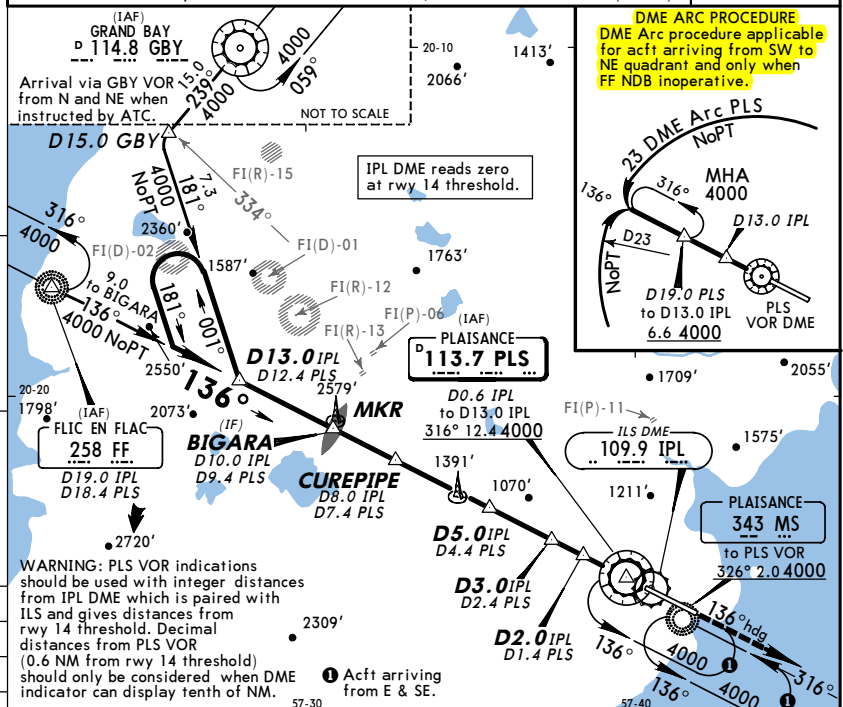
STRAIGHT-IN LANDING RWY 14	
MDA(H) 860' (677')	
ALS out	
A RVR 720m	RVR 1500m
B VIS 800m	VIS 1600m
C 2400m	3200m
D 2800m	3600m

SIR SEEWOSAGUR RAMGOOLAM INTL **JEPPESEN MAURITIUS, MAURITIUS**
 4 JAN 02 (13-1) **VOR DME Rwy 14**

*ATIS 126.2		*MAURITIUS Approach 119.1		*MAURITIUS Approach/Tower 118.1	
VOR PLS 113.7	Final Apch Crs 136°	Minimum Alt 3400' (3217')	MDA(H) 860' (677')	Apt Elev 183' RWY 183'	

MISSED APCH: Climb to 4000' on heading 136° and contact ATC.

Alt Set: hPa Rwy Elev: 7 hPa Trans level: By ATC Trans alt: 4000'(3817')



IPL DME/PLS DME	6.0/5.4	4.0/3.4	1.0/0.4
ALTITUDE (HAT)	2610' (2427')	1820' (1637')	640' (457')

D13.0 IPL D12.4 PLS
CUREPIPE D8.0 IPL D7.4 PLS
D5.0 IPL D4.4 PLS
D3.0 IPL D2.4 PLS
PLS VOR D0.6 IPL
 OCA(H) RWY 14 860'(677')

Gnd speed-Kts	70	90	100	120	140	160
Descent Gradient	6.5%	461	592	658	790	922
MAP at PLS VOR/D0.6 IPL						

HIALS 4000' on 136° hdg

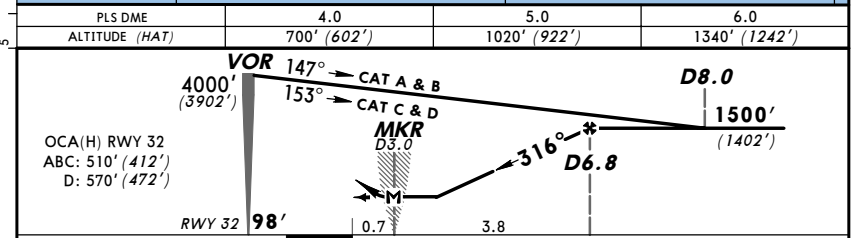
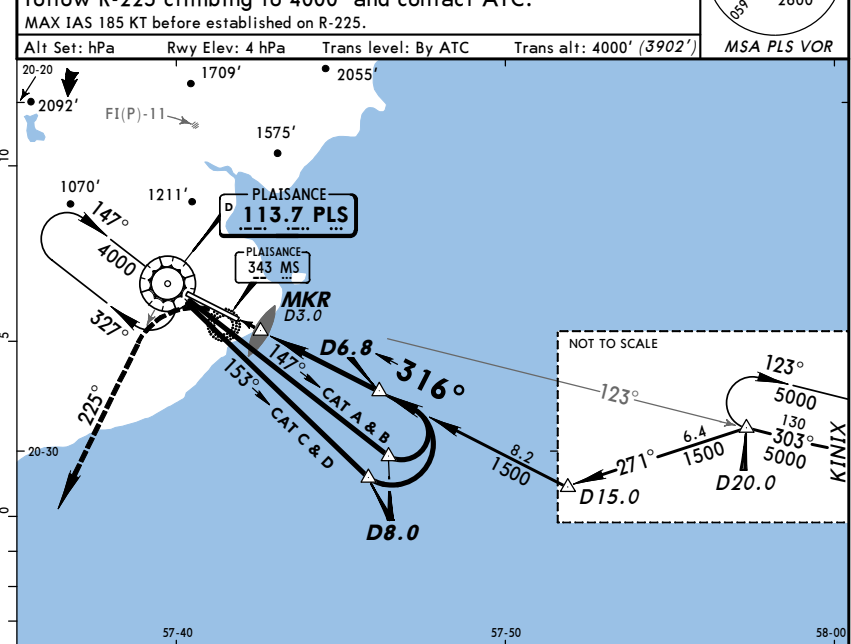
STRAIGHT-IN LANDING RWY 14		ALS out	
MDA(H) 860' (677')			
A	RVR 720m VIS 800m	RVR 1500m VIS 1600m	
B			
C	2400m	3200m	
D	2800m	3600m	

FIMP SIR SEEWOSAGUR RAMGOOLAM INTL **JEPPESEN MAURITIUS, MAURITIUS**
 4 JAN 02 (13-2) **VOR DME Rwy 32**

*ATIS 126.2		*MAURITIUS Approach 119.1		*MAURITIUS Approach/Tower 118.1	
VOR PLS 113.7	Final Apch Crs 316°	Minimum Alt 1500' (1402')	MDA(H) Refer to Minimums	Apt Elev 183' RWY 98'	

MISSED APCH: Turn LEFT as soon as practicable to intercept and follow R-225 climbing to 4000' and contact ATC.

Alt Set: hPa Rwy Elev: 4 hPa Trans level: By ATC Trans alt: 4000'(3902')



Gnd speed-Kts	70	90	100	120	140	160
Descent Gradient	5.2%	369	474	527	632	737
MAP at MKR/D3.0						

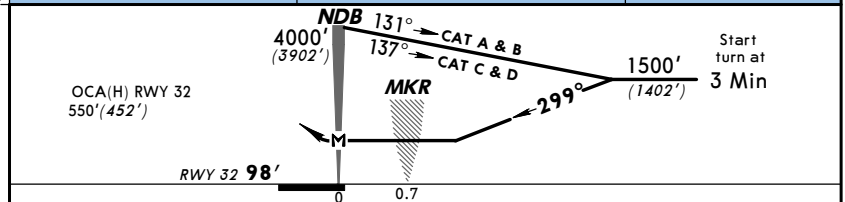
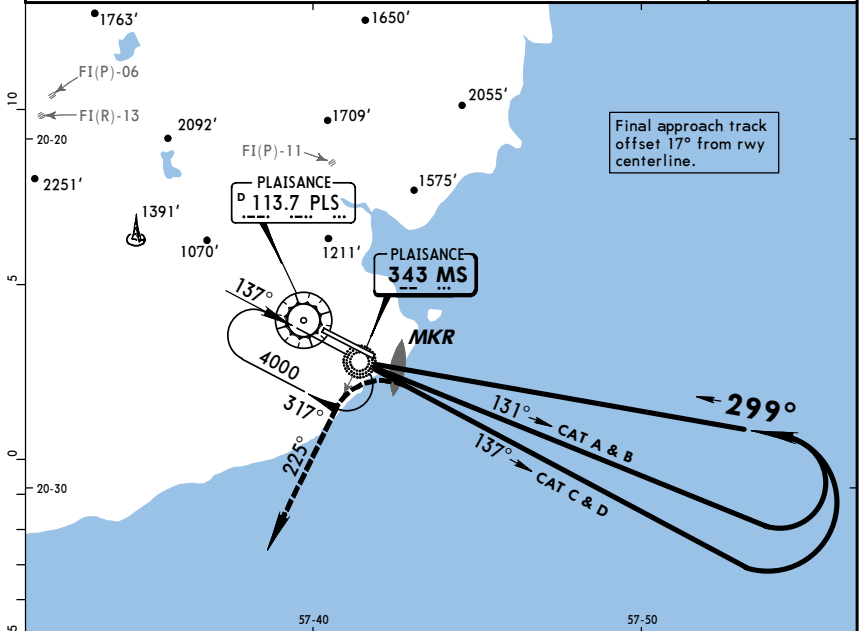
Refer to Missed Apch above

STRAIGHT-IN LANDING RWY 32		CIRCLE-TO-LAND Prohibited Northeast of runway	
MDA(H) ABC: 510' (412') D: 570' (472')			
ALS out		Max Kts	MDA(H)
A		100	870' (687') 1600m
B	1600m	135	920' (737') 1600m
C	2000m	180	1380' (1197') 4800m
D	2400m	205	1510' (1327') 4800m

FIMP
SIR SEEWOSAGUR
RAMGOOLAM INTL

JEPPESEN MAURITIUS, MAURITIUS
 4 JAN 02 (16-1)
NDB Rwy 32

*ATIS 126.2		*MAURITIUS Approach 119.1		*MAURITIUS Approach/Tower 118.1	
NDB MS 343	Final Apch Crs 299°	Minimum Alt No FAF	MDA(H) 550' (452')	Apt Elev 183'	RWY 98'
MISSED APCH: Turn LEFT as soon as practicable to intercept and follow 225° from NDB climbing to 4000' and contact ATC. MAX IAS 185 KT before established on 225° from NDB.					
Alt Set: hPa	Rwy Elev: 4 hPa	Trans level: By ATC	Trans alt: 4000'(3902')	MSA PLS VOR	



MAP at NDB	ALS	PAPI	Refer to Missed Apch above
------------	-----	------	----------------------------

PANS OPS 3	STRAIGHT-IN LANDING RWY 32		CIRCLE-TO-LAND Prohibited Northeast of runway	
	MDA(H) 550' (452')	ALS out	Max Kts	MDA(H)
A			100	870' (687')
B	1600m		135	920' (737')
C	2000m		180	1380' (1197')
D	2400m		205	1510' (1327')